

SHIFTING TECHNOLOGY GMBH

ALTE BOTTROPER STRASSE 103
45141 ESSEN
PHONE +49 201 8777 802
E-MAIL: INFO@CAE-RACING.DE

INSTALLATION MANUAL FOR CAE ULTRA-SHIFTER GOLF II / GOLF III / CORRADO / PASSAT 35 I

CABLE-CONTROLLED- GEARBOX TYPE 02M



The shifter is intended for Racing Cars without interior equipment. If center console is mounted, it must be dismantled or modified to achieve an acceptable space for the cables.

The new unit should be mounted directly on to the floorboard, so part of the carpet must be removed.

Before the assembly of the Balljoints lubricate the seat with good grease. After completing the shifter, secure the Ballstud with a cotterpin. All screws and nuts on the shifter must have Lock-Tite or anything that keeps the screws or nuts from coming loose. Never bend the controller cables! To avoid rust film, clean the steel parts with oil ever so often. To clean the alu-parts use ethyl alcohol

Removing

Remove the original parts of the shifter including the shifting cable

Bodywork:

Place the shifter on the floorboard and mark the 3 new holes as shown on the next picture. Drill 6.5mm holes (see next picture) and deburr. Drill two 18mm holes into the frontboard for the cables. The position of this holes is shown in the next pictures



Before drilling you must check if the cables have enough space Engineerroom. If not, change position of holes as far as necessary.



Mounting the shiftcables

Mount both cables at the unit. The cable has to stand out as much as possible of the case, inside there is no threads to

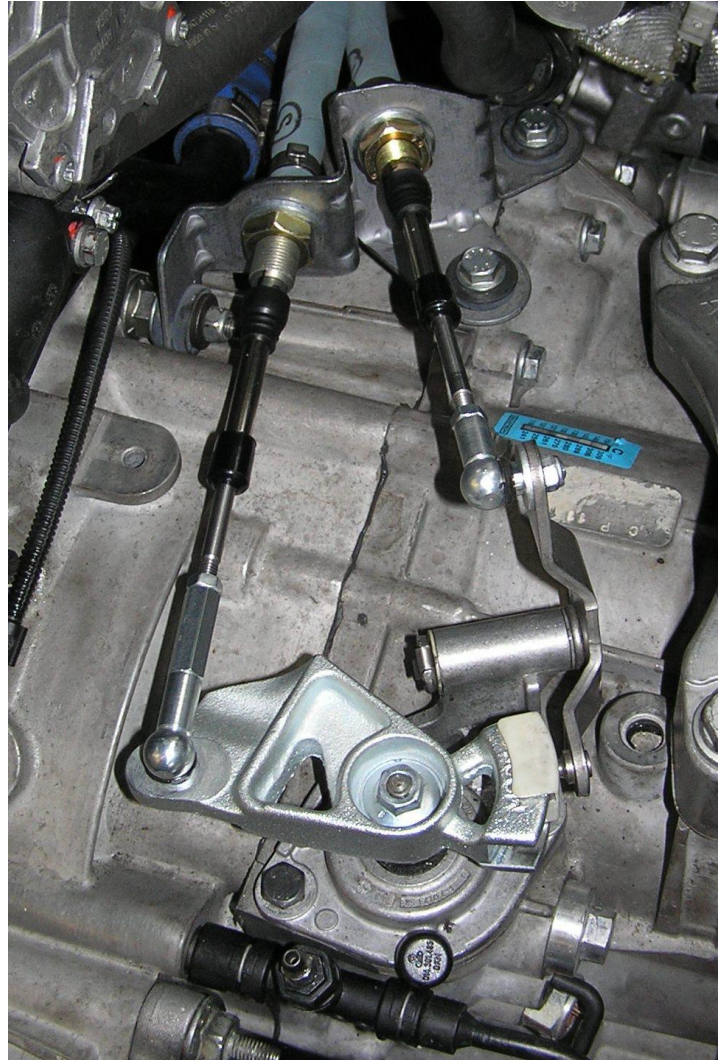


see.



The mounted cables now have to be fed through the holes in firewall and the unit can be mounted on the plate (Middle tunnel)
Mount shift and select cable in the holder plate. The cover plate will be mounted from down side. For sealing use the delivered rubber stripe.

Mount the cables to the gearbox as shown :
secure the pans with cotter pins.



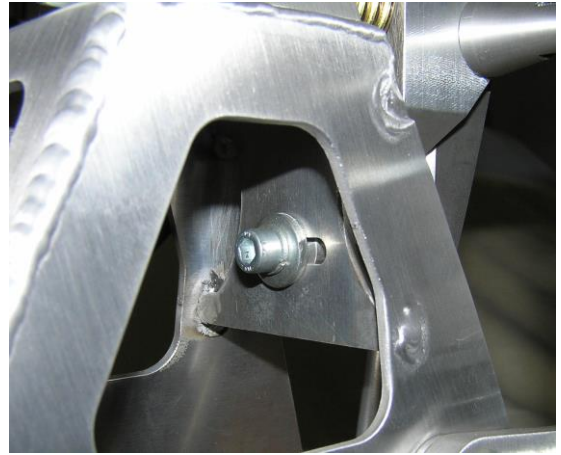
Ensure the space of the cables to the Exhaust, if necessary mount additional clamps and heatshields



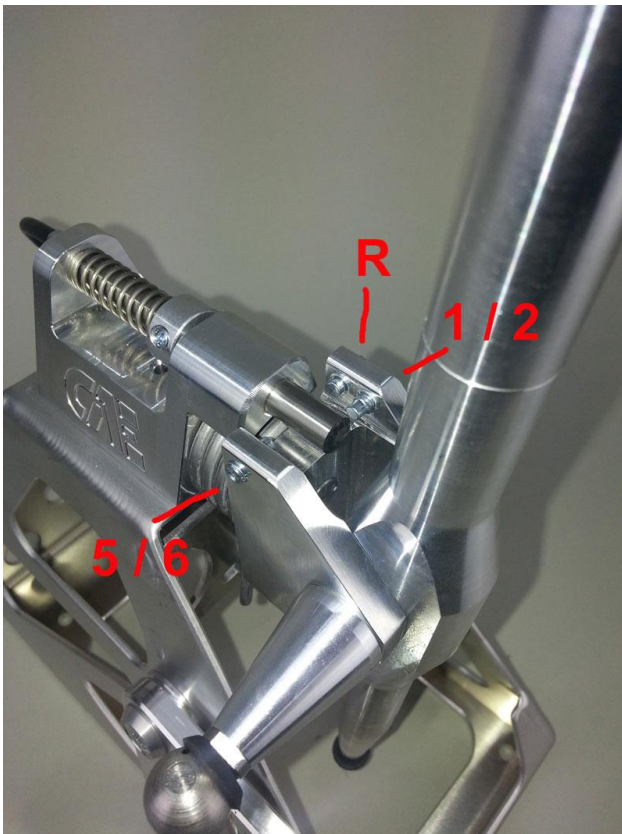
Tune the shifting
range 5 & 6
Speed

Pull off the
Connection rod at first
Now select the 3rd or 4th gear manually.
For this pull the shiftlever easy
backwards or forwards.

Now adjust the middle position of the
gearshift by adjusting the lower spring
stop under the unit with Allen wrench 5mm.



In middle position the gearshift should be slightly turned to the left



Remount the connection rod now
Adjust it fitting to the both balls

Select level 1 / 2 with gearshift and
turn stop screw until the gears 1 and 2
can be selected well.

Now select gear 5 / 6 with the gearshift
and turn stop screw until the 5th 6th
gear can be selected clearly.

Pull reverse stop bolt and enter reverse
gear. Turn stop screw until the rear
gear can be selected clearly.

Attention !!
Protect shiftcables against thermic overheat by delivered blue heat resistant tube.
Protected cables *must not* contact the exhaust system.

After installation, check all the essential functions of the Shifter while driving and readjust if necessary.

Wrong adjustment will destroy your gearbox

If you experience any problems or questions, please contact us absolutely, we need YOUR feedback to improve our products

CAE Shifting Technology wishes you a good trip